

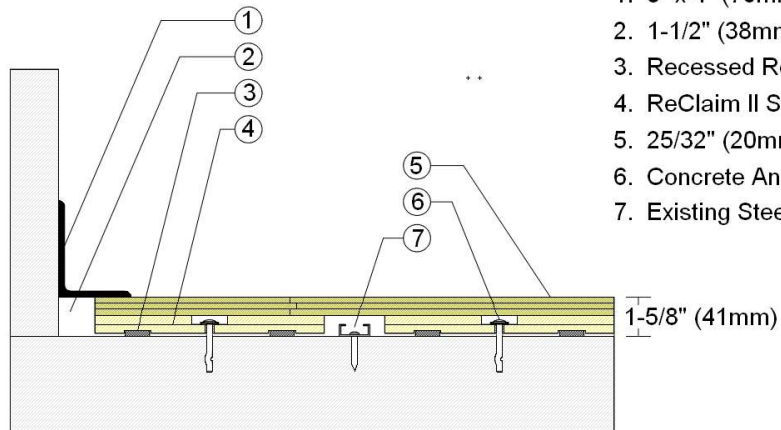


INFINITY  
Wood Floors



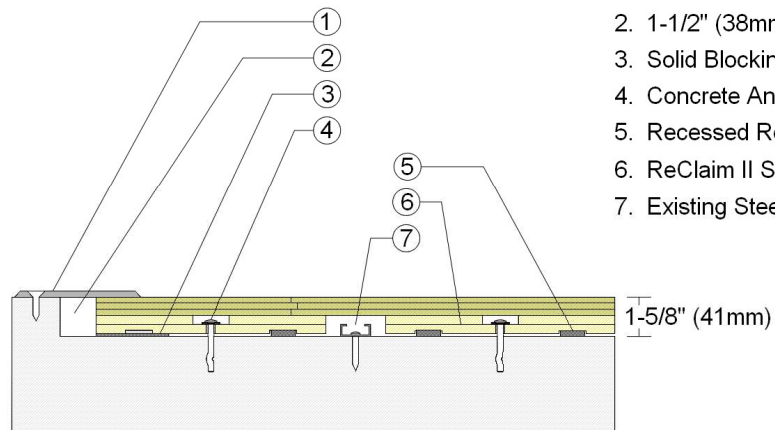
AACER  
SPORTS FLOORING

## WALLBASE



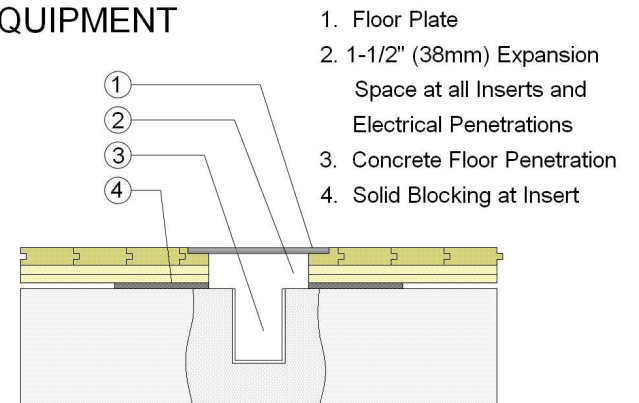
1. 3" x 4" (76mm x 101mm) Vent Cove Base
2. 1-1/2" (38mm) min. Expansion Space
3. Recessed Resilient ECO Pad
4. ReClaim II Subfloor Panel
5. 25/32" (20mm) MFMA Maple Flooring
6. Concrete Anchor Pin Assembly
7. Existing Steel Channel & Anchor

## THRESHOLD



1. 1/4" (6mm) Aluminum Threshold
2. 1-1/2" (38mm) min. Expansion Space
3. Solid Blocking at Doorway
4. Concrete Anchor Pin Assembly
5. Recessed Resilient ECO Pad
6. ReClaim II Subfloor Panel
7. Existing Steel Channel & Anchor

## EQUIPMENT



1. Floor Plate
2. 1-1/2" (38mm) Expansion Space at all Inserts and Electrical Penetrations
3. Concrete Floor Penetration
4. Solid Blocking at Insert

Description: RECLAIM II

Resilience: 1/4" (6mm) ECO pads

Drawn By: RR

Date: 1/1/23

### Revisions

ID	Description	By	Date